

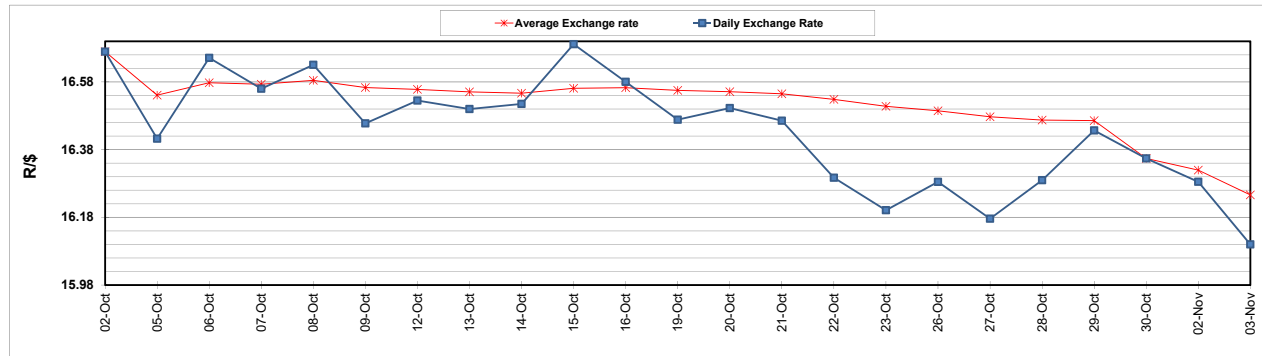
	PETROL 95 ULP	PETROL 93 ULP & LRP	DIESEL 0.05%	DIESEL 0.005%	ILL. PAR.
GAUTENG PUMP PRICE (SA c/l) AS FROM 04/11/2020	1,459.000	1,439.000	-	-	-
WHOLESALE PRICE (SA c/l) AS FROM 04/11/2020	-	-	1,225.560	1,227.960	655.828
SINGLE NATIONAL MAXIMUM RETAIL PRICE	-	-	-	-	818.000
BASIC FUEL PRICE - 03/11/2020 (SA c/l)	468.637	461.530	460.163	464.366	441.282
PRESS RELEASE CONTRIBUTION TO BFP 30/10/2020 - 03/11/2020 (SA c/l)	533.470	523.470	486.630	488.030	436.128
UNIT OVER/(UNDER) RECOVERY - 03/11/2020 (SA c/l)	64.833	61.940	26.467	23.664	(5.154)
AVERAGE BASIC FUEL PRICE 30/10/2020 - 03/11/2020	459.531	452.589	449.708	453.658	430.737
AVERAGE UNIT OVER/(UNDER) RECOVERY 30/10/2020 - 03/11/2020	73.939	70.881	36.922	34.372	5.391

ANALYSIS MOVEMENT OF AVERAGE OVER/(UNDER) RECOVERY

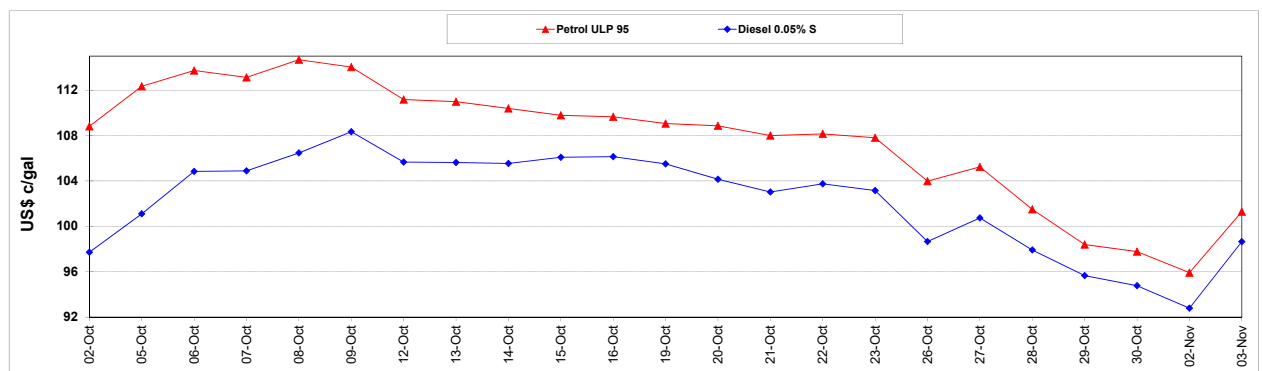
	PETROL 95	PETROL 93	DIESEL 0.05%	DIESEL 0.005%	ILL. PAR.
- MOVEMENT IN INTERNATIONAL PRODUCT PRICES	67.733	64.769	30.849	28.246	(0.426)
- MOVEMENT IN EXCHANGE RATE	6.206	6.112	6.073	6.126	5.817
AVERAGE UNIT OVER/(UNDER) RECOVERY 30/10/2020 - 03/11/2020	73.939	70.881	36.922	34.372	5.391

R/\$ EXCHANGE RATE - (R/\$16.1000 - 03/11/2020)

EXCHANGE RATE USED IN BASIC FUEL PRICE



INTERNATIONAL PRODUCT PRICES OF BASKET USED IN BASIC FUEL PRICE



BASIC FUEL PRICE IN SA CENTS PER LITRE

